

# Together

for a thriving Porirua



Winter 2024



Kia ora, welcome to the Te Rā Nui – Eastern Porirua Development newsletter.

To subscribe to our e-newsletter, email [TeRaNuiDevelopment@kaingaora.govt.nz](mailto:TeRaNuiDevelopment@kaingaora.govt.nz)

### In this issue

Closing of the Info Hub

Tē Pātē Community Space takes home a Kūmara Award

Eastside neighbourhood clean-up

Progress update

Tracking change in eastern Porirua

Mural paints picture of Porirua's cultural identity

## Our exciting new Environmental Cadetship Programme

It was a day of celebration at Te Rā Nui as we launched our exciting new Environmental Cadetship Programme. We were joined by enthusiastic cadets, our partners, the wonderful Reverend Falkland Liuvaie, local job and skills providers and the Whai class from Cannons Creek School.

Over the next 3 years, this programme will not only help our local residents gain valuable qualifications and on-the-job training but also bring more than

100,000 native plants to life in Bothamley and Cannons Creek Parks, making our community even more beautiful and vibrant.

This initiative is all about partnership. Te Rā Nui partners Kāinga Ora, Porirua City Council and Ngāti Toa Rangatira are teaming up with fantastic local jobs and skills provider Le Fale, Mahi Toa and Raranga Building Careers to deliver job, training and environmental outcomes for the East.

Our Project Director Will Pennington shares, “Te Rā Nui is more than just building homes; it’s about building up our community. We’re committed to supporting the improvement of education, job opportunities, public facilities and local life so everyone can thrive.”

The recent clearing of non-native pine trees in Bothamley and Cannons Creek Parks gave us the perfect opportunity to kick-start this cadetship programme. And with native plants sourced from

Continued on the next page

## Our exciting new Environmental Cadetship Programme (continued)

local nurseries, we're bringing our parks back to life. At our launch event, the cadets and tamariki got planting a range of native plants in Cannons Creek Park – a true symbol of our shared commitment to our environment.

Will Pennington adds, "the amazing work of local cadets, along with upgrades to our water systems, will make a big difference in our community – a cause close to all our hearts."

Every year, Le Fale Jobs and Skills Hub and Mahi Toa will put forward around 10 locals to join the programme. With support from the Porirua City Council Parks Team and Rāanga Building Careers, they'll earn qualifications and valuable experience, setting them up for future success.

### Want to get involved?

The Environmental Cadetship Programme still has spaces available. Anyone in eastern Porirua who is interested in learning more about the programme or finding other local employment opportunities is encouraged to reach out to one of these:

#### Le Fale – Jobs and Skills Hub

8 Warspite Avenue, Cannons Creek

[www.facebook.com/Lefalejobandskillshub](http://www.facebook.com/Lefalejobandskillshub)  
[info@lefale.org.nz](mailto:info@lefale.org.nz)

#### Mahi Toa

[www.ngatittoa.iwi.nz/employment](http://www.ngatittoa.iwi.nz/employment)  
[mahittoa@ngatittoa.iwi.nz](mailto:mahittoa@ngatittoa.iwi.nz)

#### Rāanga Building Careers

[www.raranga.net.nz](http://www.raranga.net.nz)



## Closing of the Info Hub

**Since 2019, Te Rā Nui Info Hub at 26 Warspite Ave has been a space to share information and to host conversations with the community about what is happening in eastern Porirua. Over the last 5 years, we have found that the community have preferred to engage with Te Rā Nui at events or online via email, Facebook or our website rather than in person at the Info Hub. As a result, we made the difficult decision to close the Info Hub at the end of March 2024.**

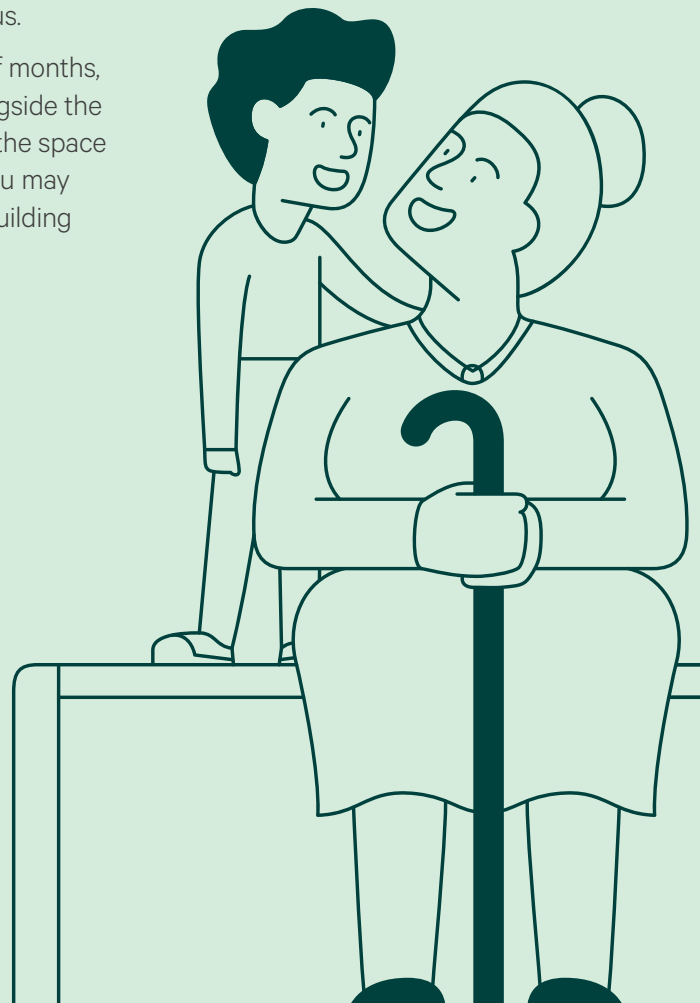
Many people have helped us set up the Info Hub and worked hard to connect the community with the information and services they needed. We want to thank everyone who has been involved in the Info Hub as well as everyone who dropped in to support us.

Over the next couple of months, we will be working alongside the landlord to pack down the space for future tenants so you may see movement in the building from time to time.

Te Rā Nui will continue to regularly share project updates with the wider community both online and at in-person events. For the most up-to-date information, you can follow us on Facebook or sign up to our newsletter.

Lenah, who many in the community dealt with at the Info Hub, remains a valuable member of our team and has new role in eastern Porirua with Kāinga Ora. She's thoroughly enjoying the fresh challenges and is actively engaged in working closely with the community.

Our project team are still working in Porirua and available if you want any information.



## Tē Pātē Community Space takes home Kūmara Award



**We're thrilled to announce that local initiative Tē Pātē Community Space took home the Mā te haukāinga hei tūāpapa ki te ao tūroa (it takes a village) Award.**

Since its launch in 2023 and thanks to the space's local Porirua Timebank kaitiaki group, Tē Pātē Community Space has been

hosting a daily homework group for tamariki after school, a mums and bubs group, Orange Sky Monday mornings and many more community-led activities.

Tē Pātē Community Space was created in response to the community's aspiration for the area. In early 2020, a group of community members approached

Te Rā Nui about the need for local spaces for rangatahi and the wider community – and we happily took up the challenge.

Located between 'the cage' and the Cannons Creek Shops, Tē Pātē has been fitted out with a kitchenette, heat pump, drinking fountain and seating. It also has an accessible ramp, deck and capacity for up to 20 people inside. And with more seating outside, it's a great little space for small groups or individuals to come together.

If you're interested in using Tē Pātē Community Space, reach out to the local Porirua Timebank kaitiaki group on [tepate5024@gmail.com](mailto:tepate5024@gmail.com) or pop in for a cuppa.

Read more here: [teranuidevelopment.co.nz/news](https://teranuidevelopment.co.nz/news)

## Eastside neighbourhood clean-up



**We want to give a big heartfelt thank you to everyone who came along and helped with the Eastside neighbourhood clean-up.**

Your dedication and enthusiasm turned our event into a massive success. It was incredible to see hundreds of people from all corners coming together to beautify their streets, homes, and neighbourhood.

In the end, we filled all the skip bins and collected hundreds of items for reuse, making a significant impact on our community and the environment.

Your efforts truly make a difference, and we couldn't be more grateful for your support. Let's continue working together to keep our neighbourhood clean and thriving!

Follow us on Facebook to find out about future clean-ups: [facebook.com/PoriruaDevelopment](https://www.facebook.com/PoriruaDevelopment)





## Progress update

The increased frequency of natural weather events, combined with the growing number of people living in the area, means we need to think about how our project can support the community, now and into the future. After significant investigation and planning we are looking to start construction on two key water infrastructure projects Building a new wetland and reservoir as well as undertaking key upgrades in Cannons Creek Park will not only enable new, warmer, drier homes to be constructed, but also help support our growing community.

### Wetland and Cannons Creek Park Update:

Following feedback from our partners Porirua City Council, Ngāti Toa Rangatira, community and key stakeholders, we are looking to undertake the following work in Cannons Creek Park:

- keep three sports fields and do work to reduce the effects of flooding on them;

- convert the bottom field (northern end) into a wetland with opportunities for recreation activities such as walking, cycling, resting or learning;
- create six new recreational spaces around the park; and
- upgrade stormwater and wastewater pipes through Cannons Creek Park to Warspite Avenue.

This work will help to improve the health of our waterways, harbour and wider environment, whilst providing opportunities to enhance the community's connection to the park, ensuring it is a space for everyone to access and use.

For more information visit - [teranuidevelopment.co.nz/your-voice/wetland/](https://teranuidevelopment.co.nz/your-voice/wetland/)

### Have your say

Porirua City Council is looking for community feedback on temporary park closures and the proposed easements. To share

your thoughts visit [haveyoursay.porirua.govt.nz/cannons-creek-park-and-wetland](https://haveyoursay.porirua.govt.nz/cannons-creek-park-and-wetland).

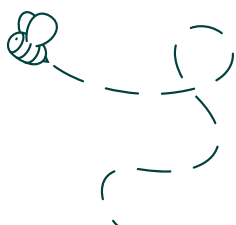
**Feedback closes 11 August 2024.**

### Reservoir

We're building a new, larger water supply tank (reservoir) ensuring both current and future residents of Porirua have access to drinking water every day, including during a natural disaster. The new, additional reservoir will help increase the level of clean drinking water available from 4.5 million litres to 13.5 million litres. To help connect the new reservoir to eastern Porirua and Whitby residents, we will also be installing around 3 km of new bulk water supply pipes. The new reservoir will be built behind the existing reservoir on Stemhead Lane in Whitby and construction is scheduled to start in late 2024. It will take around two years to complete.

### Estimated development timeline

Spring 23	Summer 23/24	Autumn 24	Winter 24
<ul style="list-style-type: none"> <li>• Completed - 3 homes on Driver Crescent.</li> <li>• Completed – land preparation for new housing on western boundary of the Esk Site</li> </ul>	<ul style="list-style-type: none"> <li>• Site prepared for 14 new state houses at Matahourua Crescent will be completed.</li> <li>• Delivery of 6 homes to Cannons Creek.</li> </ul>	<ul style="list-style-type: none"> <li>• Completed two sites prepared for new homes in Matahourua Crescent.</li> <li>• Replanting work started in Bothamley Park.</li> </ul>	<ul style="list-style-type: none"> <li>• Site prepared for over 100 new homes on our Esk development.</li> <li>• 18 state homes on Waka Ama Street completed with a community event planned.</li> <li>• 90% of Bothamley Park wastewater pipes upgrade complete.</li> <li>• Champion St reopened to the public under traffic management.</li> <li>• Construction to commence on 14 new state houses in Matahourua Crescent.</li> <li>• Resurfacing and line marking of Castor and Matahourua complete.</li> </ul>





## Tracking change in eastern Porirua

### How your input makes a difference

Eastern Porirua will be going through some big and very exciting changes over the next 20 years. Accurate data about the area will help ensure the changes benefit our diverse community, not only for current residents but for future generations as well. To ensure Te Rā Nui is creating positive change, Kāinga Ora ran its first Eastern Porirua Community Survey in February and March 2024.

The survey asked questions that helped paint a picture about what it's like to live in the area today. Future community surveys, run every 4 years, will show us how Te Rā Nui is contributing to the wider wellbeing of eastern Porirua.

The information we have gathered is taonga to be used with care and to support the eastern Porirua community as it undergoes redevelopment.

### Meet the community researchers

For Livi Finau, eastern Porirua has been home for 50 years. Originally from Samoa, he and his family now “belong to the land” here. “My children and grandchildren – and now my great grandchildren – were born on this whenua. They all belong here,” he says.

Livi is one of five Kāinga Ora community researchers from a range of backgrounds who

### What we achieved together

APPROXIMATELY

1,200

SURVEYS COMPLETED

19%

COMPLETED BY RANGATAHI/YOUTH



helped eastern Porirua locals to have their say through the survey.

Alongside Livi, Mikaera Penese, Eirenei Vailaau-Ah Kuoi, Husam Alfarhoodi and Netti Rawiri were all out in our community encouraging locals to share their views and making it as easy as possible for people to complete the survey.

All share a strong connection to eastern Porirua and the many cultures that contribute to its rich local identity. They also share a passion for seeing the area thrive.

### Next steps



Summarise community feedback.



Review alongside other sources such as Annual Residents Survey, Census 2023, Quality of Life Survey.



Share final report – information in the report will be presented through graphs and tables so that survey participants cannot be identified. The report will be available for everyone to use from late 2024 on the Porirua City Council website.

“We’ll only lift the standard of living in Porirua if we all work together. And that’s why I believe all residents should fill in the survey,” Livi says.

**Thank you to everyone who completed the survey as well as the many community organisations and our local community researchers who supported the effort.**

# Mural paints picture of Porirua's cultural identity



## Blending vibrant blues and greens, Liana Leiatua gets to work on her mural in Waitangirua.

Just like the colours on her palette, Liana's artwork takes shape as a swirling symbol of connection – of past and future, physical and spiritual. At its centre, a grassy mountain landscape signifies the aspirations of her eastern Porirua community.

Patterns of all colours continue across their café wall canvas, threading together in one unified artwork to represent one united community.

“My cultural identity and how we interact with other cultures, is really important to me,” Liana says.

At the mural's centre stands a woman, Ūkaipō. According to legend, she was known for providing care, kai and shelter for travellers passing through. She is represented with outstretched arms of whero, reaching the peak of the mountain as if holding this place together.

“The ultimate thing for me is that there's this aroha, this love, that holds everything together. It's the love of my cultures that I want to express through my work.”

Born to a Samoan father and Scottish mother, Liana says both cultures shared similarly strong ideals despite being separated by 15,000 kilometres of land and sea.

“Porirua is a tūrangawaewae for me because I was brought up here and this community has really shaped me. I seem to have that coming through my art,” Liana says. “When I was working on this, people would approach me and ask questions or give me information about the history of this place, so it was a real communal process.”

Liana says her community's strong sense of identity and togetherness will be what makes Te Rā Nui a success. “That's what I love about Porirua – it's an aroha.”

## Want more information?

Appointments can be made via the website or email or by calling the Information Centre.

**W:** [www.teranuidevelopment.co.nz](http://www.teranuidevelopment.co.nz)

**E:** [TeRaNuiDevelopment@Kaingaora.govt.nz](mailto:TeRaNuiDevelopment@Kaingaora.govt.nz)

**E-newsletter:** Subscribe to our latest updates by visiting the website or sending us an email

**Facebook:** [facebook.com/PoriruaDevelopment](https://facebook.com/PoriruaDevelopment)

## Kāinga Ora – Homes and Communities

If you are a Kāinga Ora customer and have rehousing or customer-related questions, please contact the Customer Support Centre on **0800 801 601**.



## Laying the groundwork

Te Aranga Alliance is our civil works partner. It prepares the land, removes existing state homes and upgrades streets and infrastructure before building starts.

For any questions about civil works, please contact Te Aranga on **0800 832 726** or email [hello@tearanga.co.nz](mailto:hello@tearanga.co.nz)

