

Expression of Interest (EOI):

# Cultural Elements Artist Commission

**Project:** Cultural Elements for  
Cannons Creek Park

**Commissioning Body:** Te Rā Nui  
Development, in partnership with Ngāti Toa  
and Porirua City Council.

**EOI Closing Date:** Friday 10 July 2026



## Overview

We are seeking expressions of interest from artists or artist collectives to design, fabricate and install, a series of cultural elements that reflect the diverse identities, stories, and lived experience of the Eastern Porirua community – “A park that looks and feels like us”.

The project aims to celebrate the richness of the area’s cultural landscape, including tangata moana (Pacific peoples), refugee and migrant communities. This approach has been developed in partnership with Ngāti Toa, who support the commissioning of artistic interventions that speak authentically to place, people, and shared belonging.

Artists with a strong creative vision but varied levels of experience in fabrication or installation are warmly encouraged to apply.

Separate to this EOI, but aligned with its kaupapa - Hermann Salzmann has been commissioned to deliver a waharoa and Pou Whenua.

## Support and Collaboration

This commission is open to both established and emerging artists as well as collectives.

Kāinga Ora will coordinate community engagement workshops, ensuring artists are supported to engage meaningfully without being solely responsible for facilitation or logistics.

Artists are expected to participate in engagement activities relevant to the development of their work and respond thoughtfully to community input as part of the design process.

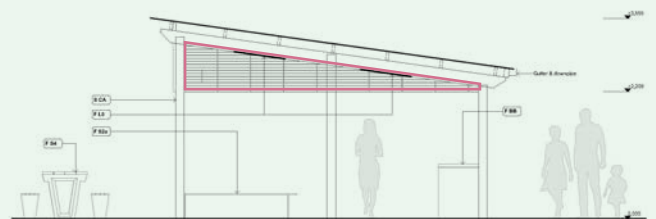
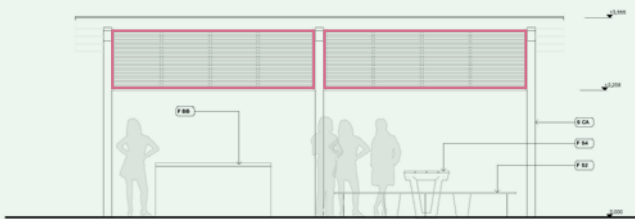
Artists will be responsible for delivering the full scope of the work, from design through to fabrication and installation. Where artists do not have the capacity or experience to deliver all aspects independently, they are encouraged to discuss this with the commissioning team. Kāinga Ora may be able to provide project coordination support and support connections with appropriate fabricators, installers, or technical partners to form a delivery team.

Support, mentorship, and delivery pathways will be discussed with shortlisted artists to ensure the final outcome is high quality, achievable, and aligned with the artist’s practice.

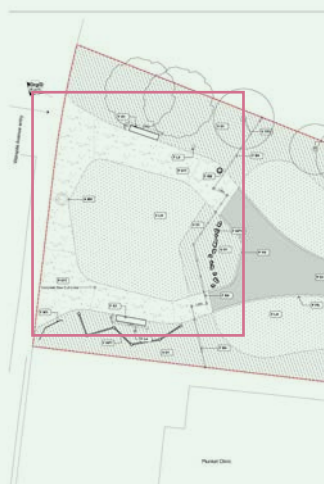
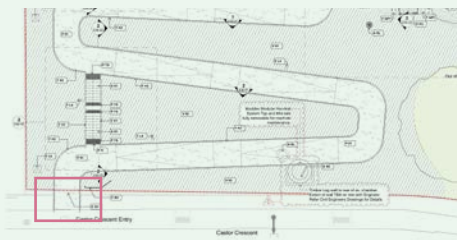
# Project Scope

Selected artist(s) will be commissioned to design and deliver culturally relevant elements. This includes full delivery across design, fabrication, and installation that can be incorporated into some or all of the following:

## BBQ shelter shade panels and/or posts



## Patterns in paving at entrances





Selected artist(s) will be commissioned to lead the creative design of culturally relevant elements. This can be for one, several, or all elements. Artists who require additional capability to deliver any stage of the work are encouraged to identify this early. The commissioning team may be able to support the formation of a delivery approach, including connecting artists with suitable technical specialists or partners where needed.

### Artists must:

- Have experience working with or within Pacific, Māori, migrant, or multicultural contexts
- Possess the capability to deliver high-quality outcomes within a fixed budget
- Are open to participating in community engagement processes led by Kāinga Ora, including working with rangatahi, schools, mana whenua, and local stakeholders to inform the design
- Have prior experience in public art

## Submission Requirements

Please provide the following:

1. Artist/Collective Name, contact details, and website/portfolio links
2. A short statement of interest (300–500 words)
3. CV or artist biography (max. 2 pages)
4. Up to five examples of previous work (images + descriptions)
5. Any initial ideas, sketches, or references (optional)

## Timeline

- EOI opens: **Monday 15 June 2026**
- EOI closes: **Friday 10 July 2026**
- Shortlisting: **Friday 24 July 2026**
- Final selection: **Friday 7 August 2026**
- Design + fabrication period: **September 2026 to May 2027**
- Installation: **June 2027**

## How to Submit

Please email your Expression of Interest, or any questions regarding this opportunity before submitting to:

**[culturalelements@kaingaora.govt.nz](mailto:culturalelements@kaingaora.govt.nz)**

Include the subject line: **“EOI – Cultural Elements Artist Commission”**.

*Kindly limit all email attachments to a maximum size of 35MB.*

## Terms & Conditions

- Any changes to the scope or nature of the work, after the proposal has been accepted, needs to be agreed upon by all parties.
- Submitting an Expression of Interest does not guarantee selection or commission. This EOI is an initial step to identify artists whose practice and approach align with the kaupapa of the project.
- The commissioning partners may shortlist artists, request additional information, or choose not to proceed with a commission if a suitable outcome cannot be achieved.
- The total project budget is fixed and must cover all aspects of the work, including design, materials, fabrication, consenting and compliance, community engagement, installation, and contingency. Budget details will be confirmed with the selected artist(s). Support and guidance will be provided where possible.
- We reserve the right to commission some but not all proposed elements and by responding to this EOI, artists and commissioning partners are not guaranteed to receive a minimum commitment to commissioning.
- The selected artist(s) will enter into a formal commissioning agreement that will set out timelines, payment milestones, and responsibilities in detail.
- Copyright in the artwork will remain with the artist. The commissioning partners will request a non exclusive, royalty free licence to use images of the work for non commercial purposes such as promotion, reporting, documentation, publications and signage.
- Cultural integrity is central to this project. All designs will be developed in collaboration with, and subject to guidance and endorsement from, Ngāti Toa and appointed cultural advisors. Artists should be open to feedback and refinement as part of this process.
- Community engagement is an integral part of the commission. Artists will be supported to engage meaningfully and respectfully with local communities, rangatahi, and stakeholders as part of the design process.
- Artists are responsible for ensuring their work meets relevant health and safety requirements and local authority standards.
- The commissioned works must be robust, safe, and suitable for long term outdoor public display.
- All information submitted as part of the EOI will be treated respectfully and used solely for the purposes of assessment.
- Project timelines may shift in response to wider project or funding considerations. Any changes will be clearly communicated with shortlisted or selected artists.