



## Tala toetoe ote fakatasiiga mote komuniti

Te tala toetoe tenei e faka'asi iei a mea ne maua mai, ite vaega muamua ote fakatasiiga mote Porirua Development, tela ne kamata mai ia Mati ke oko kia Tesema 2019.

A matou e fia iloa mene a mea e faka'taua ne tino mai Porirua I Sasae I te olotou komuniti, mea kola e tau o faka'atili lei atu, kae maise mo taimi mai mua. Ne faipatigina a mataupu I mea tau fale, enevailomene, ooloolomalaga, fakafaigofiega, malae, koga tafao, kope (facilities) ate komuniti, fale fakatau mo mea ote ola lei (fakaimasasaki). A mataupu konei ne faipatigina I roundtables talanoa, maopoopoga, I loto i Social Pinpoint, se digital engagement platform.

Te lasi ote fautuaga ne maua, tela e aumai neia se malamalama lasi e uiga ki mea kola e 'taua ki tino o Porirua I sasae, kae maise I olotou olaga mote kiloga mote lumanai.

Te tala toetoe tenei e fakaasi mai se kilooga matalasi ote fakatasiiga tenei. Ka manako koe o tai faka'atili lei atu tou malamalama ite fakatasiiga tenei, e mafai o maua ne koe ite *Community Engagement Report: Whakawhānaungatanga*.

## Te kamataaaga

Ia Novema 2018 ne fakailoa mai ne te malo e \$1.5 piliona o tupe I luga ote 25 tausaga, e galue ie I te toe fakafouga o Porirua I sasae.

A te Porirua Development Project tenei e panaki mo laua konei, kote Kāinga Ora mote Ngāti Toa Rangatira.

A te Porirua Development e faka'taua ne 'latou te 'lei mote taugofie o fale, kae maise te faka'atili leiga atu ote ola lei mote maumea o tino I Porirua I sasae, kise tulaga 'lei atu kite 'nofo, galue mote putiputiakega ote kaiga.

Ko te au'u ote polotieki, e aofia katoa iei vaega auala kola e mafai ei o faka'lei atili atu o tuakoi, tela e fakafaigofie ki tino o 'mai o fakatasi, io me olo saale o fai a olotou pisinisi mo mea masani.

Ko te masina o Mati 2019, ne kamata iei te Porirua Development, o fakatasitasi mo komuniti ke maua mai se malamalama ki manako'oga mo mafaufauga taua o latou, ko te mea ke fakaasi a olotou leo mo fautuaga ite kamataaaga ote palani ate Porirua Development.

## Tala toetoe o fautuaga

Te fakatasitasiiga lasi tenei, ne tauave ite 9 masina, tela ne maua mai iei a fautuaga taua e uke I mataupu valevale mai te komuniti, tela ka fesoasoani kite palani.

A mataupu taua kola ne lasi te talanoa o tino kiei ko fale, enevailomene mote ola lei. E aofia iei ko mataupu o koga fakafiafia kae tafao, fakatasitasiiga, mea ololomalaga mote ola 'lei mote saogalemu ote kominiuti.

Niisi o mataupu ne tai lasi te talanoa kiei ko community facilities (kope ate kominiuti), mea ololomalaga, mea taulima mo 'tu mo aganuu kesekese mote fakafaigaofie ki mea ote ola lei mote ola masani.

E lasi te lagolago ki suiga o fale mo mea fakatutu 'lei I Porirua I sasae, kae e isi foki se faeteetega. E isi se manavase I tino mafai latou e siki ki se koga kae e 'se mafai o toe foki mai, io me 'se mafai o foki mai ona kote togi mafa o fale.

A tino o Porirua I sasae e manako a latou ke aofia I fuafuaga ote polotieki tenei, ke aofia a latou I mataupu mo tonu kola e mafai o pokotia a latou iei. A latou e manako ke galue fakatasi mote Kāinga Ora I fuafuaga mo fakatinooga ote polotieki tenei.

### Mea taua e manavase I ei

Fakaasiga o mea kola e manavase iei a tino:

- ave keatea kae ko seai olotou fale
- fakatumauga ote sokooga loto kite koga mote fale
- te pokotiaga mote taugofie ote fakafouga
- 'se lei te fesokotakiiga, mote 'se tonu mote numi o fakamatalaaga
- 'se fiafia e pela mote fakafouga talu'ai
- e manako ke iloa ate aumaiga ote palani
- e 'se lava te maina mote mautinoa tonu ia latou konei e aofia ite fakafouga
- sea te uiga ote atiakega tenei ki te kominiuti, kae e fakatupe kae fakasoasoa pefea
- te tokouekega e seki toka kit e 'mafuliiga tenei.

## Ne fakatasi pefea a matou

E uke a fakatasitasiiga mo maopoopooga ne fai ite 2019 e aofia iei:

- Ka Mua Ka Muri: e 40 workshops ne fai mo tamaliki akoga
- Share Your Voice sessions (luni mo lulai)
- taipola ite Careerfest, the Pacific Night Market, mote Waitangirua Market
- Change is Coming sessions (Novema kia Tesema), tela e aofia iei te fakatasiiga mo tino mai I fenua valevale mo fakapotopotooga valevale
- Social Pinpoint interactive mape mo savea
- fakatasi atu I fonotaga mo fakapotopotooga fakapitooa.

I te fakatasiiga tenei, ne fakatu iei te Porirua Engagement Strategy mo te Youth Engagement Strategy ko te mea ke talafeagai a te auala o te fakatasiiga tenei.

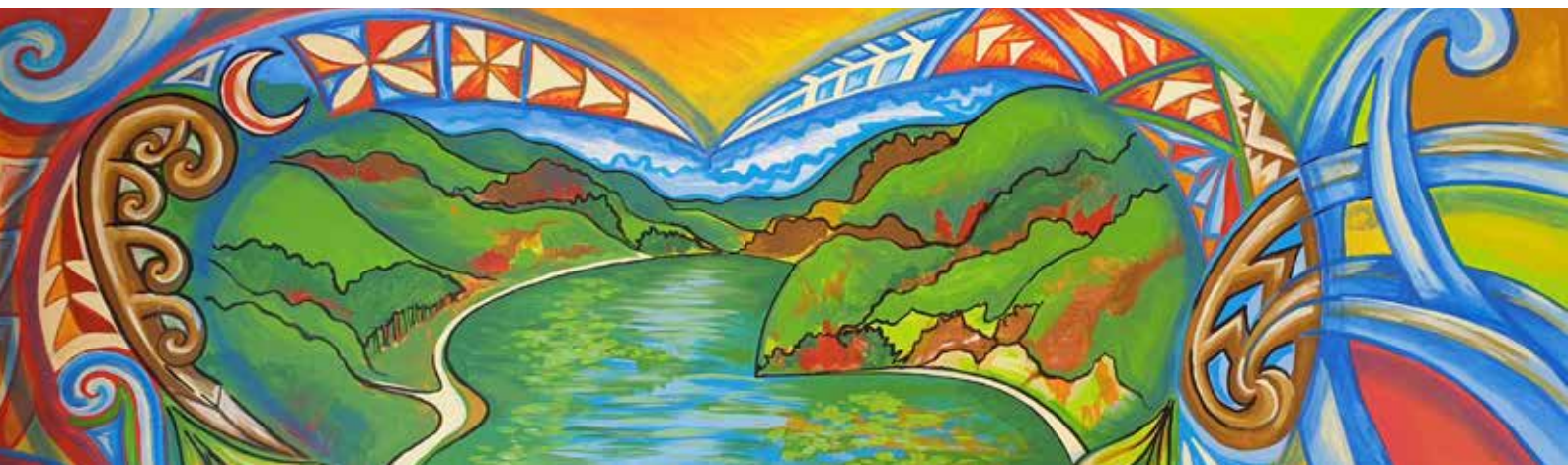
## Ne fai pefea ne matou ke taunuu atu ate muna

A matou e manako kite tokoukega o tino mai Porirua I sasae, ke tukufakatasi a olotou manatu mo aitia, mo olotou leo ke fakalauiloa a mea ne tupu mo galuega I auala konei:

- fakamatalaaga I luga ote Porirua Development mote Porirua City
- council websites mo Facebook pages
- I luga I Communities Facebook pages
- Porirua Development's e-newsletter mo email
- mo flyers mo posters e ave ki fale, sitoa, pisinisi, maketi
- lotu, akonga mo community services I Porirua I sasae
- fakatasi atu ki fono a Residents Association, network groupings
- mo fono a Komuniti ate Pasefika
- advertising I te *Kapi-Mana News*
- fakasalalauga I te Samoa Capital Radio.

E silia atu ite 2,300 a tino ne aofia ite fakatasiiga tenei ite 2019, tela ne maua iei a manatu e silia atu ite 5,000.

**More than 2,300 people took part in the engagements during 2019, contributing over 5,000 ideas. This included residents, community and church leaders, school and college students, representatives from community groups, social services and business owners.**





## Nea mea ne taku mai ne latou

### Fale

Tokoukega ne taku mai ne latou te taua o fale ke mafanafana, e 'se 'ku, saogalemu kae avanoa. E uke a olotou aitia I itukaiga kesekese, itukaiga kesekese o faitega o fale, mote pokotiaga kiei mafai ko fanaka te tokouke o tino.

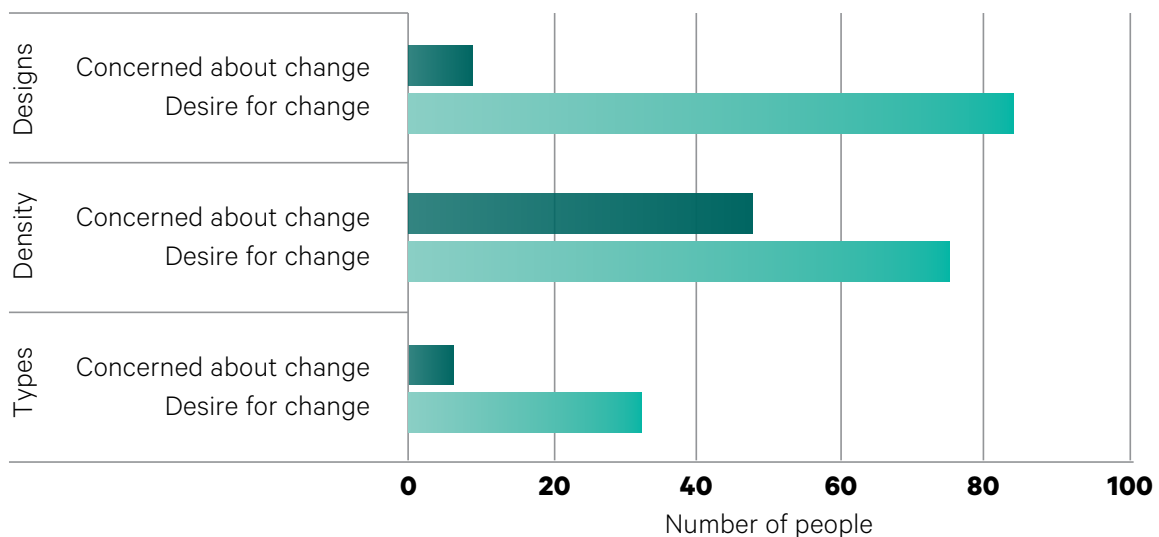
E foliga mai, me I tino e maina kae malamalama ite manakogia ote tuputupuake, kae e faetete foki I pokotiaga se 'lei ote tuputupuakega, kae aunoa mose mafauauga ki avanoaga I tua, mea totino (privacy), mo koga tafao, fakasoasoaga o mea fakateletele mote saogalemu.

E isi se lagolago I vaega e uke o itukaiga mo faiteega o fale, e pela mote fakaasiga a te graph tenei mai lalo. E ui ei loa e lasi te lago kite fakaukega o fale, kae e nofo foki te mataku Ite fuliga fakafou tenei.

A tino e faetete I te fakaukega mo itukaiga o faiteega o fale fou. A latou e maina ite fakaukega o fale, kae ko latou e manako ki vaega taaga o fale kola e lei ki kaiga lasi mo sose tupulaga. A fale totino e taua 'ki ia latou kae maise loa ate taugofie o fale.

A tino a avaka aka ne latou te manavase kite fakafouga tenei, kae maise loa e manavase ia latou ma tolo atu ki tua ona kote taugata o fale, kote fakatau atu o laukele ate malo, io meko te galo atu io me mafuli o mea kola e taua ki tino o Porirua I sasae. E tokouke e sapole ite lava o fale kola e taugofie, me tau o togi io me rent, kae fakaasi mai te olotou sapole kite mafai nete tupulaga mai mua o togi a fale totino mo latou.

**Concern versus desire for change to housing**





## Enevailomene

E lasi foki te faipatiiga I te fakatokaaga o te tae'ega mote 'peiga o kaiga, kamata mai ite manakomia ke faka'atili lei atu te faifaiga o te pei faka inorganic ke fakaatili lei atu ate fakatokaga o te recycling. E manokomia ke lavea atu a lapisi bins lasi mai recycling (fakafouga) ofisa I koga fakatau lasi (shopping centres) mo fakamatalaaga mo fautuaga manino kite faifaiga o te fakafouga (recycle), mo fakamatalaaga moa e pei valevale a kaiga.

E fakataua foki te tausiiga mote faifakaleiga o alaga vai mai I vaiua mo tatou (storm and waste water), mote tokoukega e fakaasi a olotou sapolee e uiga ki tulaga lei o alaga vai, kae maise loa te fakamaseiga a latou kite Awarua-o-Porirua Harbour (te namo o Porirua).

E manakomia ne tino ke lavea atu te fakaukeega o koga lanulauniu (greener spaces), fatoaga lasi, auala teuteu fakagaligali (attractive streetscapes) mo avanoaga kite natula. E nofofale I olotou mafaufauga ate pokotiaga o te itia o fale saitia, tela e manakomia ke fakamautinoa, te iai o avanoaga mo fatoaga (greener space) I fuafuaga mo palani.

## Te olologa

Te tokoukeega e malie me sili atu te faigofie o te fakaaogaaga o te motoka e ui iei e taugata a penitini mote tausiga o te motoka. E 'taua ate fakamautinoa o koga mo mea ololomalaga ke faka'atili lei atu kote mea ke avanoa kae e mafai ne tino o olo lei iei, pela mo te sasale, tele pasika, tele I scooters pela foki mote tele I motoka.

Te tausiga o auala mo motoka, paka (parking), auala foliki ne mataupu e lasi te faipati kiei, kae maise te fakaatili lei atuuga o tulaga o te saogalemu mote faigofie o avanoaga kiei.

Tokoukega e fakaasi mai I mea tau ololomalaga I Porirua I sasale, e 'se na loko lei. Tokoukega a sapole o fakaaoga ona kote 'se lei, se fakatuaga, kae maise e mao te sasale ki bustops,

e 'se saoglemu a bustops, e 'se saogalemu mai ite 'tau ote aso (weathertightness), e 'se lava a aula, kae se katoatoa lei foki te sokooga ki auala lasi.

A te atili leiga mot e faigofie o mea tau ololomalaga, se mataupu e faigata ona ko aula foliki, mo maluga o aula. E 'se faigofie o totuli I loto I pasi, e 'se lava a nofoaga mote faiteeka o busstops e se 'lei, e 'se faigofie mo wheelchair, walking frames mop trams.

A tulaga o auala e 'se faigofie te sasale, kia latou kola e fakaaoga a wheelchairs mo pram. A tino e sapole ite olotou saogalemu mai I motoka kola e fakatele makini, te 'se lei o uiga o tino fakatelele I sokooka aula pela foki mote uke o motoka ite auala I taimi e kamata kae oti iei a galuega.

E lasi te lagolago ke inivesi I auala foliki kote mea ke tai faka'atili lei atu te saogalemu, te lasi mote faigofie te avanoa o sokooga mo auala tai lasi atu e pela foki mo niisi fakai foliki kae ke fakamalosi atu ki tino ke fakaaoga soko ne latou. E manakomia ke lavea atu kite fakaatili lei atu mote fakamalosi o te tele pasika, ke isi loa auala fakapitoa mo pasika, te faka'akoga o tino fakatelele mote sokotaga'aga lei o auala tele pasika.

## Paaka mo koga avanoa

Se manatu e fakataua a autu konei ke fakatuu a paaka mo koga fakafiafia kae ke autu'u loa ki kaiga mo mea fai ate komuniti, mote saogalemu mote faigofie o te olo ki ei; faka'atili lei atuuga o te natula ite tokiga o lakau taua fakatatou; puiga o koga tafao; fakatelelega fakalei o mea fai ate komuniti; tautuana te tausiiga o te taonga o te Bothamley Park mote Cannons Creek taisala (lake).

E makogina ke tai fakaatili lei atuuga o amenities pela mo koga fai BBQ, lua mo umu tao, nofoaga, fale foliki, vai puna (fountain), moli, mo lakau lasi mo fakamalu iei kaiga I koga fakafiafia mo mea e upega mo fesoasoani kite tafao mote fakamalosi o tino.



### Koga fakatau

Toi itiiti ko afa a tino e manako ke lavea ne latou vaega falekoloa valevale I aso mai mua, fakalauefega mo fakalasiiga o maketi, supamaketi, fale meat, falekoloa gatu mo niisi mea aka valevale. A tino e manako ke tai fakamutana ifo o fale takeaways, pubs mote TAB, kae falaudefega atu te avanoaga mote faigofie ki mea kai lei mote ola lei, mo meakai mai I itu'uga kesekese o tou tino.

### Fale mo mea ate komuniti

A tino e manakomia ke lavea ne latou te faka'atili lei atuuga o paaka, fakatuuga one avanoaga mo tafao tela fakautuu loa ki kaiga, mo koga fakafiafia kae tafao, kola e saogalemu kae faigofie te olo kiei. E lasi 'ki te manakomia o fakauke kae faka atili lei atuuga o koga avanoa mote komuniti (community spaces) I Porirua I sasae. Ko fale I taimi nei e 'se talafeagai mo fakamoemoega o tino I aso nei.

Ate tokoukega e manako ke lavea ne latou a fale mo koga tafao kola e sili atu ite lei mo tafao kae fakamalosilosi tinoe I Porirua I sasae. Ko manatu, e aofia iei ke isi se multi-purpose sport facility mo volipoolo, pasiketipoolo, netipoolo mo se gym iei. Tela ko mafai o fai a vasega mo akoga fakamalosi tino, clinic o tafaoga valevae mot e faiga o tafaoga lasi.

A faifaiga mo 'tu mo aganuu e milo tasi I loto i Porirua I sasae kae tokouke e fautua mai kae manako ke lavea ne latou a mea konei I tou siosiomaga. A tino e fakaasi mai me manakomia ne avanoaga mo mea konei ke tuputu lei kae ola I tou siosiomaga.

### Kiloga mote 2045

Se vaega mai ite Change is Coming sessions tela ne fai ia Novema kia Tesema, a tino ne fakafesiligina me sea te olotou manakooga, lagona ki foliga kola e fiafia a latou kiei ke tau o nofo iei a Porirua ite 25 tausaga mai mua nei. Ne fakafesiligina foki a tamaliki akoga mai Corinna School mo Porirua College, e uiga mote kilooga a latou mo aso mai mua.

E tokouke a latou ne kilo ki mua kae mafaufau ki olotou tamaliki mo mokopuna mese tulaga pefea ote olaga e manako latou mo latou, kae niisi ne kilo kite olaga nei kae manako latou ke tai fakaatili lei atu mo taimi mai mua. Ko tali e fakasolo mai I 'mau fakamoemoega (aspirational), fakaasiiga (visionary), mo 'mau faka te foitino (practical) kae toe fakamasaua mai ate olaga tonu i aso taki tatasi.

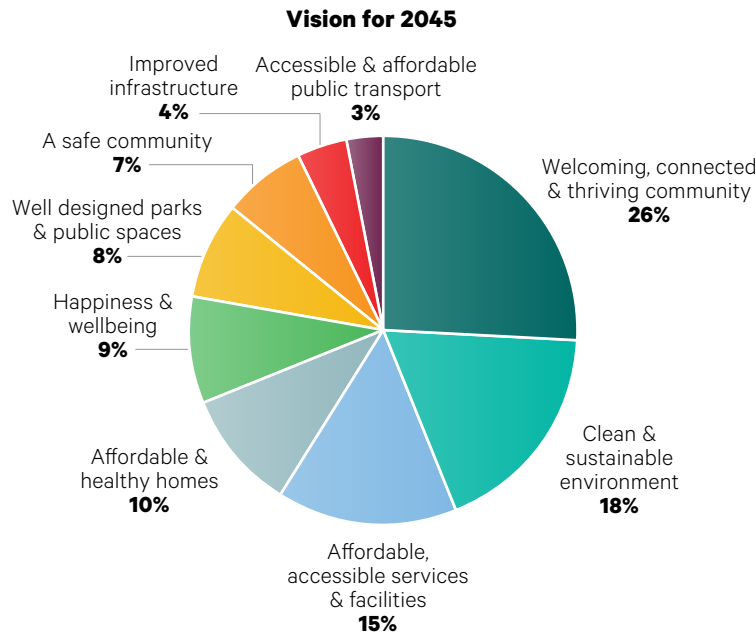
### Fakailoagina

E fakafetai atu ki a tatou katoa mo vasega kola ne aofia ite fakatasiiga tenei, tino taki tokotasi, kaiga, pisinisi, kaulotu mo vasega kola ne tuku mai a olotou taimi kae fai tusaga o fesoasoani kite fakafoligaga ote lumanai o Porirua I sasae.

## Fakaasiga e aumai mai autu

E silia atu te 430 a tali ne akutu mai ite sukesukega o autu (thematic analysis), ke fakailoa mai a mea e sili te olotou taua ki tino mafai e mafaufau kite lumanai ote olotou nuku.

Konei a molimau a latou kite kiloga mao mo Porirua I sasae mote 2045.



**Ke 'fai mo fakai tela e fia ola iei au kite se gata mai**

**Ke 'fai pela mote Porirua ote Pasefika**

**Se koga tela e muamua ite lalolagi I tulaga ote faigofie te sokotaki**

**Ko Porirua City matagofie, tela a tino katoa e ola fealofani**

**Se koga tela e mafai iei a tou tamaliki o ola lei ite olotou siosiomaga fou mai ite alofa tauanoa ote Atua**

**Se nuku tela e fakataua te tulaga ote alofa, mote putiputiakega ote fakataualofa ki se isi**

## Sua lakaaga

Ko manatu fautua (feedback) ne onoono kiei a te team mai ite Porirua Development mo olotou technical consultants, tela se vaega ote palani saukatoa ote koga tenei, te Spatial Delivery Strategy, tela se palani mote tuputupuakega mote atiakega o Porirua I sasae. E fakasino mai ise auala e loa a mea kola ka fai ite atiakega tenei – fale, paaka, falekoloa, auala mo nissi. Te Spatial Delivery Strategy e fakailoa mai a mea kola ka fai ite atiekega tenei, nea vaega atiakega ka fai, tela e fakamatata likiliki mai a mea kola e tau o taunu ite fakaotiga ote atiakega tenei, pela mo mea fakatutu mo mea kola e fai I koga avanoa (physical + spatial outcomes).

A te Spatial Delivery Strategy e seti neia te kiloga mao mote fakamoemoega ote tausiiga mote fakatumauga o tulaga o mea tau oloolomalaga, vai, fale, tulaga 'lei o ofisa (centres), saogalemua, fale a te komuniti, iloga o komuniti, tokiiga o lakau fakatatou mo niisi mea kola e uke e tau. Io me ka fai.

Ko te iai ote Spatial Delivery Strategy e sui ne ia, a kilooga mo fakamoemoega ote komuniti, stakeholders, tino faimanafa, iwi mo te malo lasi mo malo ite nuku, tela ka mafai iei ne te malo lasi mo malo ite nuku o tausi kae atafai ate gasoologa vave (atiakega o fale) ite nuku. A te ata ote Spatial Delivery Strategy ka fakaasi kite komuniti mo fautuaga ite 2020, tela se vaega e tasi ote vaega e lua (phase 2) ote faifaiga ote fakatasi/fakamau (engagement process).