



Fakatutalaaga Moe e Heagapi

Ko e potaaga hanai ke fakakite e lakaaga fakamua he tau fakatutalaagahe Faahi Gahua Fakalaulahi i Porirua ne kamata he mahina ha Mati ki a Tesemo 2019.

Manako a mautolu ke iloa po ke heigoa ne tū uho ke he tau tagata he faahi uta i Porirua ke he ha lautolu a heagaapi, ko e heigoa ka fakahagahaga mitaki, mo e, ko e heigoa kua manako a lautolu ke kitia anoiha. Ne fakatutala a mautolu hagai ke he tau kaina, takatakaimotu, tau puhala ō fano, tau hala lotu, tau paaka mo e tau fonua tokanoa, tau fale tolu mo e tau fale fakafua koloa, aofia foki e malolō tino mo e moui tupuola. Ko e tau mataulu nai na hake mai hā ko e falu a puhala, ne putoia e fono viko he laulau, vahega fefakaakoaki, tau fakaholoaga pihia e tau meli hila ko e puhala uta fekau mafiti.

Ko e tau manatu uho a nei ne fakakite ki a mautolu e hokulo he tau mena ne manako ki ai e tau tagata he faahi uta i Porirua, tau mena ne aga a lautolu ki ai pihia mo e onoono mamao atu ki mua.

Maeke he potaaga nai ke fakakite e kitiaaga laulahi he tau fakatutalaaga. To moua e fakalulahiaga he tau fakatutala nai he *Hokotaki Folafoa-manatu mo e Hegaapi: Whakawhanaungatanga.*

Muituaaga

Ne fakailoa he Fakatufono he mahina ha Novema tau 2018 e fafatiaga tupe ko e \$1.5 e piliona ke lata mo e 25 e tau tau ke gahua fakalataha mo e heagaapi ke fakahagahaga mitaki e faahi uta ha Porirua. Ko e matagahua he Faahi Fakalaulahi i Porirua kua fakamooli ai ke gahua aulua mo e tau Matakau ko e Kāinga Ora, Porirua City Council mo e Ngāti Toa Rangatira.

Onoono e Faahi Fakalaulahi ke he tū hagahaga mitaki he tau fale, ke fai talahauaga ke he kaina mo e fakatau mitaki, mo e fakahagahaga mitaki foki e tau momoui tagata pihia e tau mena moua, ke eke e faahi lalo i Porirua, mo taone kua mitaki ke heapi gahua mo e feaki hake ai e tau fānau.

Ko e fuafuaaga he matagahua nai kua putoia ai foki e tau fafaahi oti ke he tau puhala ke fakahagahaga mitaki e tau katofia ke fakamukamuka e tau tagata ke omai fakalataha mo e oatu ke taute ha lautolu a tau fekafekauaga.

Ne kamata e tau fakatutala he Faahi Fakalulahi mo e heagaapi he mahina ha Mati 2019 ke iloa e tau manako tagata pihia mo e tau mohemiti mua atu ke kitia kua logona ha lautolu a tau leo mo e tau manatu ke he kamataaga he tau fakatokatokaaga he Faahi Fakalaulahi.

Potaaga he tau manatu fakakite

Ko e fakatokaaga folafola manatu ne taute ai ke he hiva e mahina ti moua mai loga e tau tali mai he tau vahega kehekehe he heagaapi ke he tau vahega mataulu kehekehe.

Uta he tua, ko e tau kaina, takatakaimotu mo e tūaga moui tupuola e tau mataulu ne manako e tau tagata ke fakatutala ki ai. Putoia e falu a mataulu tuga e tau fonua tokanoa, tau puhala fakafetui, tau okiokiaga mo e fakatū matagi, tau puhala, mo e haohao mitaki he heagaapi.

Falu a mataulu ne manako e tokologa ki ai, ko e tau fale tolo, tau puhala ōfenoga, fakakite e tau taleni, lafitaha he tau atumotu mo e mukamuka ke kumi atu ke he tau puhala malolō tino mo e tau gahua ma e tau tagata.

Tokologa ne omoi ke he hikiaga he tau kaina he faahi uta i Porirua ka e talia mo e fakauaua. Ko e tupetupe he neke hiki ha ko e taha vala he fakaholoaga nai ti nakai maeke ke liliu atu po kua ai maeke ke totogi e tau kaina ha ko e malikitiaga he tau tupe ke nonofo ai.

Manako e tau tagata he faahi uta i Porirua ke putoia ke he matagahua nai, mo e ke fai talahauaga ke he tau fakatokaaga ka lauia a lautolu. Ko e ha lautolu a manako ke gahua mo e Kāinga Ora ke he tāmataaga he palana pihia mo e fakagahuaaga he matagahua nai.

Tau matapatu manatu tupetupe

Falu manatu tupetupe ne fakakite he tau tagata:

- hiki ke he taha mena po ke ai moua e kaina
- tumau e matutakiaga hokulo mo e kaina kua mahani ki ai
- fāhia ke totogi mo e fakamahani ke he hikiaga foou
- nākai mitaki e tau matutakiaga, fakavaia mo e tau fakailoaga nākai hako
- fakaatukehe hā kua tuku ke he fakahikuaga
- puhala ne fakailoa e fekau mo e manako ke laulahi e iloaga
- nākai mahino mai i a lautolu ne taute e tau fakafoouaga
- ko e heigoa e kakano he matagahua nai ke he tau tagata, mo e tufatufa fēfē e tau fafatiaga tupe
- nākai mautali oti ke he hikiaga nai

Maeke fēfē a mautolu ke putoia

Ne fai fono a mautolu mo e heagapi mo lautolu ka fakatupe he tau 2019 ti fakatutala foki ke he tau mena nai:

- Ka Mua Ka Muri: molea e 40 he tau vahega fakaako mo e tau fānau aoga pihia mo e tau pulotu ne fai taleni
- Tau fakaakoaga ke tufatufa e tau leo (luni mo lulai)
- fakafua koloa he CAREERfest, Pō Makete he Pasifika mo e Makete i Waitangirua
- fakaholoaga, Ko e Hoko Mai fai e Hikiaga – (Novema ki a Tesemo) ke putoia e fakatutalaaga mo e tau atumotu hokoia pihia mo e tau matakau
- Social Pinpoint – fakatutalaaga ke he tau matakavi mo e tau fuafuaaga, fakalataha ke he tau fonoaga fakamahao mo lautolu ka fakatupe.

Puhala ne fakahoko e fekau ke he tau tagata

Manako a mautolu ke tokologa e tau tagata he faahi uta i Porirua ka fakakite e tau manatu mo e tau leo pihia ke fakatolomaki e tau fekau mo e tau fakaholoaga ke he tau puhala nai:

- tau fakailoaga mai he Faahi Fakalaulahi mo e Taone ko Porirua
- Melihila he Matakau Takitaki Maaga mo e Fofoga Pepa mata pihia mo e heagaapi
- Fofoga PePa mata he tau matakau
- Tohi Tala mo e puhala imeli he Porirua Development
- tau tohi fakatātā ka tufa ke he tau kaina, tau fale koloa, tau Pisinisi mo e tau makete
- tau Ekalesia, tau Aoga, mo e tau faahi kua leveki e hegaapi he faahi uta i Porirua
- oatu ke he tau kaina, tau fono matakau, mo e matutaki mo e tau matakau
- mo e fonoaga he tau atumotu he Pasifika
- fakapūloa he tau Tohi tala *Kapi Mana News*
- fakailoa he Leo Taogo Samoa Capital.

Molea e 2,300 e tagata ne nonofo he tau folafolaaga manatu nai he tau 2019, mo e fakakite ai, molea e 5,000 he tau manatu. Putoia ai e tau kaina nonofo, tau takitaki he Loto mo e hegaapi, fanau he tau Aoga mo e tau Kolisi, hukui mai he tau matakau he hegaapi, lautolu ne leveki e tau tagata pihia mo e tau pule he tau Pisinisi.



Tau mena ne talahau he tau tagata ki a mautolu he tau mataulu

Tau kaina

Tokologa e tau magafaoa ne manako ke he kaina kua mafana, mōmō, haohao mitaki mo e tata ke oatu ki ai. Loga ha lautolu a tau manatu ke he tau vahega kaina kehekehe, foliga mo e tālaga he fale, mo e tupetupe kaeke ke loga e kaina he taha e mena.

Kitia ai, fai maamaaga e tau tagata ke he manako ke fakatupu, ka e maimainā ke he tau lekua ka putuputui e tau fale, ka e nākai fai ononoaga ke he laulahi ha fafo, tonuhia, tūaga motokā pihia e levekiaga he tau motokā mo e haohao mitaki.

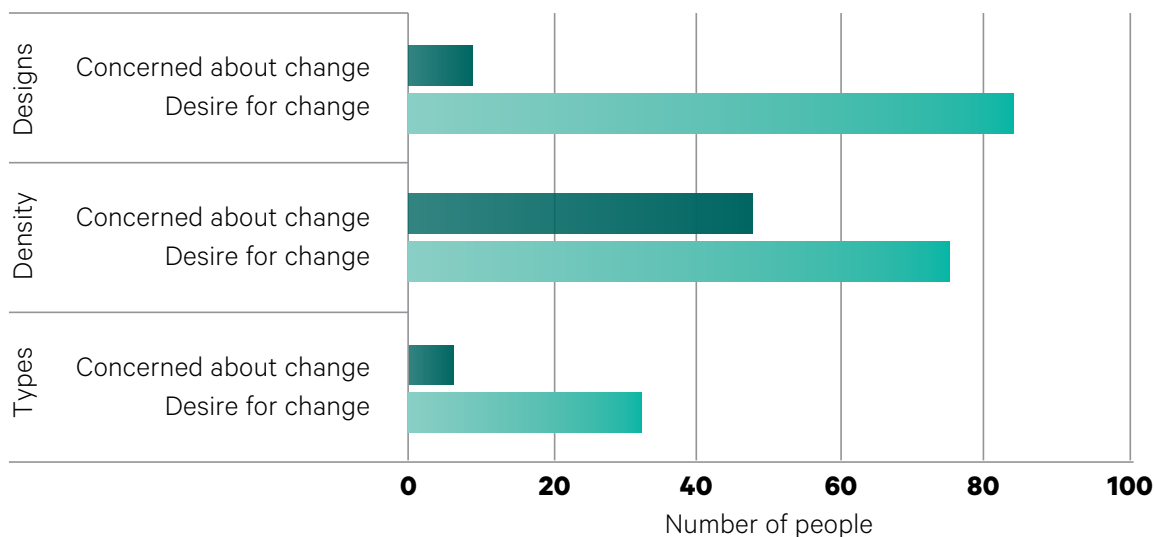
Tokologa ne omoi ke he tau vahega fale kehekehe mo e puhala ne tālaga aki ke tuga ne fakakite he fakatino nā i lalo. Pete nī he

tokologa ne omoi ke tālaga loga e tau kaina, ka e fai ne tupetupe ke he tau hihikiaga.

Tokaga lahi e tau tagata ke he malikiti he tau kaina pihia mo e tau puhala ka tālaga aki. Kitia e lautolu e lata ke tālaga loga foki e tau kaina, ka e manako ke kitia e kaina kua tālaga fakalata ma e tau magafaoa tokologa mo e kehekehe e tau atuhau ka nonofo ai. Ko e mohemiti a ia he tokologa e tau tagata ke fakatau e kaina ti manako lahi ke kitia e kaina tālaga ke he puhala foou mo e fakatau mukamuka.

Fakakite he tokologa e tupetupe ke he fakafoouaga nai, mua atu ki a lautolu ne kua poka kehe hā ko e malikiti hake he totogi he kaina, fakafua he fonua fakatufono, mo e to galo foki e fofoga fuluola he faahi uta i Porirua ne aga ki ai e tokologa. Tokologa ne fakaatukehe hā kua ai fai fale ne tau mukamuka, ke fakatau po ke nofo totogi, mo e fakakite foki e tupetupe ma e tau atuhau anoia ka nākai maeke ke fakatau e kaina.

Concern versus desire for change to housing





Takatakaimotu

Lahi e fakatutala ke he okoaga mo e uta keheaga he tau veve, ke kamata mai he manako ke tuku fakavahega e tau veve ke mukamuka ka taute. Manako e tau tagata ke he tau piniveve lalahi mo e fai matakavi fakavahega veve he tau fale fakafua koloa, tau fakailoaga kua mahino mitaki mo e fai fakaakoaga ke he tau puhala ke fakavahega e tau veve ti pihia e lakaaga kua taute ke puipui e tolo fakahānoa he tau veve.

Tokoluga foki e ononoaga ke he tau puhala leveki ka tō e afā mo e tau vai kiva, ti tokologa ne fakakite e tau manatu tupetupe ke he tau halavai pihia mo e kiva he lotoava he Te Awarua-o-Porirua.

Manako foki e tau tagata ke kitia e malikiti he tau fonua tokanoa, tau maala akau, fakafufuluola he tau kauhala mo e ataina ke kitia e takatakai fonua. Manamanatu a lautolu ke he lekua ka tupu he putuputui e tau kaina, ti manako ke fai peehiaga ka tuku ke he palana mo e tālaga, ke hā i ai foki e tau fonua tokanoa.

Tau puhala ō fano

Tokologa ne manatu kua mukamuka nī, mafiti mo e gagahaga mitaki ke fakaaoga e motokā ke ōfano ai, pete he tauuka e penesini mo e taute ka malona. Ke kitia kua holo mitaki epuhala ō fano mo e palana he taone ke fakatupu e manako he tau tagata ke ō fano – he lakahui, heke pasikala tāholi, ō fano he tau pasikala sikuta – ke fakamahino.

Velavela foki e fakatutala ke he levekiaga he tau peleōafi, tau fakatūaga motokāi, puhalatū mo e tau hala ō hui, onono ke he taofi ke lagaki hake e haohao mitaki mo e taute e loto taone ke mukamuka ka ō fano.

Ko e kitiaaga laulahi a ia, kua nakai gagahaga mitaki e tau puhala o fano he faahi uta i Porirua. Fakakite he tau tagata e maimainā ke fakaaoga e tau pasi, muihua ke he tau kakano nai, ko e nākai holo tumau mo e fā mule, mamao e mena ke laka ke he tūaga pasi, ai fai puipuiaga ka tū e pasi mo e fakamaluaga, ai loga e tau hala pasi,

pihia mo e ai mukamuka ke hohoko ke he tau matapatu hala ōfano.

Ko e taha lekua lahi foki he tau hala pasi, ko e tau hala ō fano mo e tau polopolo he puhalatū, hā kua nākai maeke he pasi ke tuku hifo ki lalo, tokolalo e tau nofoa, pihia mo e tālagaaga he tau pasi, nākai fai fakamaluaga, nākai fai mena foki ma e tau peleō toho, tau tagata fakaaoga tokotoko mo e tau puleme heke tama.

Ko e tūaga foki he tau puhalatū mo e tau hala o hui kua gatau lahi kia lautolu ne o hui po ke fakaaoga he tau peleō toho, tau peleō heke tama po ke puleme. Tokologa ne fakakite e tupetupe ke he tau peleō holo mafiti, fakahanoa e tau tagata fakaholo he tau tamaga, pihia mo e magaaho ka uhouho e loga he tau peleōafi.

Tokologa ne omoi ke tālaga e tau hala ō hui, ke fakahagahaga mitaki a lautolu, fakalaulahi, mo e mukamuka ke oatu ke he tau matakavi ne manako ki ai, maeke foki ke fakamamafana e tau tagata ke lakahui. Manako foki e tau tagata ke tokologa ka fakaaoga e tau pasikala tāholi ti omoi e lautolu ke taute e tau laini ma e tau pasikala tāholi, fakaaoga ma e tau puhala fakaholo mo e tāholi, pihia foki e tau hala ke mukamuka e matutakiaga.

Tau paaka mo e tau fonua tokanoa

Ko e hikiaga ne manako ki ai e tau tagata ke kitia kua hā i ai e tau koloa ke taute tunupaku mo e tau gutuumu ke faiumu, tau nofoa nonofo, tau fale fakamumuli, tau inuaga vai, mitaki e tau mōli, tau akau ke fakamalu e tau magafaoa ka oatu ke fiafia, faofao tino mo e tau koloa ke pelē ai. Tokologa ne kitia, ko e tokanoaaga a nei ke taute taha matakavi po ke kaina ke lata ma e fakafiafiaga he tau tagata oti, ke hā i ai e fuga fata ke taute e tau fakafiafiaga koli mo e lologo, fai faahi ke lata ma e tau feua sipoti tuga e kilikiki, (kilikiki Samoa), mo e ke tali e falu a feua fakafiafia, mo e taha mena ma e fakaaoga he tau fanau.

Tau fale fakafua koloa

Fuafua ke he hafa a lautolu ne manako ke kitia e tau vahega fale koloa kehekehe he tau tau i mua, tuga e fakalaulahiaga he tau



makete ke fakafua e tau koloa kai, fai kautaha fakafua koloa foou mo e fale fakafua valamanu ti pihia e fale ie mo e tau koloa tui. Manako e tau tagata ke tukuhifo e nūmela he tau falekai moua mafiti, tau fale kava, fale peki nua, ka e fakalahi e atāina ke he tau kai ne moua e malolō tino mo e tau vahega kai kehekehe. Manako e tau tagata ke tokologa a lautolu he heagaapi ka moua e tau Pisinisi, ke maeke ke fakagahua a lautolu ne ai fai gahua a lautolu he taone ia.

Tau koloa fakaaoga auloa ma e hegaapi

Manako e tau tagata ke kitia kua fai hikiaga lahi ka taute ke he tau paaka mo e tālaga he matakavi kua haohao mitaki mo e mukamuka ke oatu e tau fānau ke fefeua ai pihia e tau koloa faofao tino. Lahi e manako mo e ole ke loga e tau matakavi tokanoa ke lata ma e heagaapi he faahi uta i Porirua. Ko e tau kaina he magaaho nai kua nā kai hagahaga mitaki ti nā kai lata ke fakaaoga.

Fai tagata ne manako ke kitia e tau koloa faofao tino kua mitaki mo e tau feua sipoti he faahi uta i Porirua. Falu a manatu ne fakakite ke moua taha Kaina faofao tino ke lata mo e feua netepolo, volipolo, paseketepolo, mo e taha poko faofao tino. Maeke ke fai mena ke taute e tau vahega faofao, taute e tau sipoti kehekehe mo e tali e tau feua sipoti.

Fevihuakie tau tufuga mo e agamotu he faahi uta i Porirua ti tokologa ne manako ke kitia e tau tufuga kua fakatātā he heagaapi. Fakakite foki he tau tagata e manako ke he taha mena ne maeke ke fakatupu tolomaki e tau tufuga mo e tau agamotu.

Onono mamao atu ke he tau 2045

Ko e taha vala he tau fakaaoga ka taute he mahina ha Novema mo Tesemo, ne ole a mautolu ke he tau tagata ke manamanatu ke he tau mena ne manako ha lautolu a heagaapi ke foliga mai, fakaleo mo e logona he 25 e tau tau ki mua. Ne hūhū atu foki ke he tau fānau he Aoga i Corinna mo e Kolisi ha Porirua ke he ha lautolu a onono atu ki mua.

Tokologa ne kua taute pihia mo e fitā e manamanatu ke he ha lautolu a tau fānau mo e tau mokopuna, mo e moui fēfē ne manako a lautolu ma e tau fānau, ka ko e falu ne onono ke he tūaga he magaaho nai mo e manako ke kitia kua fakagahaga mitaki. Ko e tau tali kua kamata he tau manako loto mo e onono mamao ke fakagahuahua mo e ke atagia mai ha lautolu mo e fakatino mai ke he tau aho takitaha.

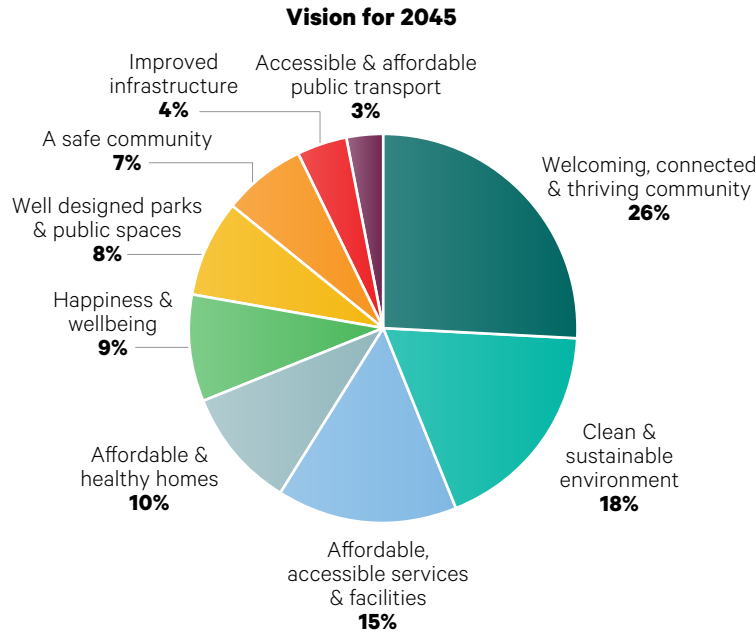
Tau manatu fakaaue

Fakaaue ke he tau tagata oti mo e tau matakau ne putoia ke he tau fakatulaaga, tau tagata nonofo mau, tau tagata takitokotaha, tau magafaoa, tau pisinisi, tau Ekalesia mo e tau matakau kehekehe ne foaki e tau magaaho ke lafitaki mo e lagomatai ke talatalai e anoia he faahi uta i Porirua.

Onoono ki mua mo e mataulu

Molea e 430 e tali ne fakamaopopo ti taute e mautolu e fuafuaga he tau mataulu ke kitia ko e heigoa ne tū tokologa ke he tau tagata ka manamanatu a lautolu ke he hegaapi ha lautolu he tau tau i mua.

Hanei e manatu he tau tagata mo e ha lautolu a onoonoaga ki mua ke lata ma e faahi ki uta i Porirua ma e tau 2045.



To eke ia mo taone kua manako au ke nofo ai tukulagi

To eke ia mo Pasifika Porirua

Ko e taone fuluola ko Porirua, ka nonofo feofanaki ai e tau tagata oti

Ko e taone ka takitaki e lalolagi he fakafeleveia a lautolu mai fafo

To nonofo fiafia e tau atuhau he ha lautolu a kaina foou, hā ko e fakaalofa mo e mafola he Atua

Ko e heagaapi ne feaki e mahani fakaalofa mo e felagomataiaki e taha ke he taha

Falu a lakaaga

Ko e tau tali oti nai ne kua talia he matakau Faahi Fakalaulahi i Porirua mo e ha lautolu a tau pulotu fakatonutonu ko e taha vala he ha mautolu a gahua fakamakutu, ko e Palana ma e Matagahua nai, ko e palana a nei ke lata ma e fakatupuaga mo e fakalaulahiaga he faahi uta i Porirua. To fakatoka ai e palana onoono mamao ki mua ma e gahua fakalaulahi ka fakamooli, ko e tau kaina, tau paaka, tau fale koloa, tau loto maaga mo e falu foki. Ne fakakite he Palana Fakagahua e gahua kua lata ke taute, ko e gahua falaulahi fēfē kua lata, mo e ke fakamaama e fakatino po ke fua ka moua mai he palana ne lata e tau gahua fakalaulahi ke fakamooli.

Maeke foki he fakatokaaga Palana Fakagahua nai ke fakatoka e fakakiteaga mo e amaamanakaiaga ke fakatumau e tau puhala ō fano, meā he vai, putuputui he tau kaina, tau loto taone muhukoloa, haofia, fale tolo he heagaapi, tūaga he tau tagata he hegaapi, tau akau tō mo e falu foki.

Ko e Palana Fakagahua nai kua fakakite e kitiaaga mo e tau manako loto he heagaapi, lautolu ka fakatupe, tau pule fonua, iwi, Fakatufono lahi mo e tau taone ke fakataā e puhala kua aoga ke fakagahua ke tupu mafiti e gahua fakalalahi he tau kaina) he matakavi. Ko e fakataitai he Palana Fakagahua na ito taatu ia ke he heagaapi ma e ha lautolu a tau manatu he tau 2020, ko e taha vala he lakaaga ke ua aki he tau fakatutalaaga.